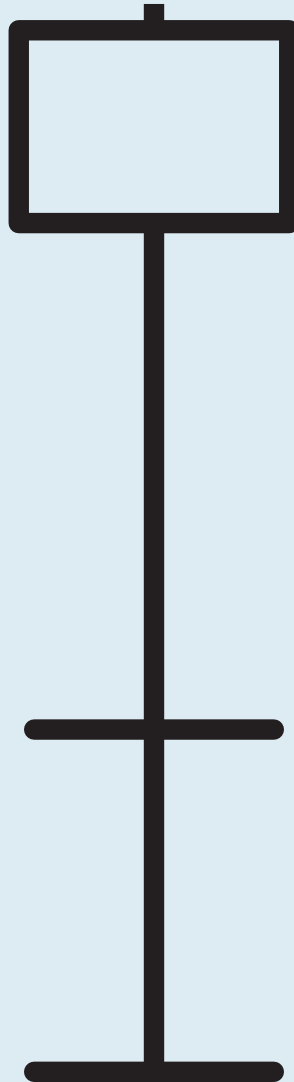


Note Floor Lamp



DESIGNED IN 2015

ASSEMBLY NOTES | REV 01



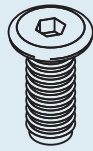
ROCKING DUET.

Lamp and table come together in a stunning union. A slender yet substantial steel beam allows a linen shade to hover above a cantilevered table top and base.

NEED A HAND?

Contact us at service@bludot.com or **844.425.8368** for assistance.

Parts & Hardware



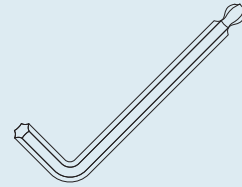
QTY 6

Pt. 1076



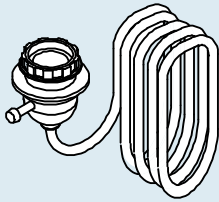
QTY 6

Pt. 8040



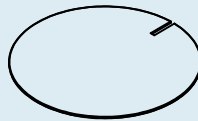
QTY 1

Pt. 9018



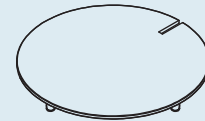
QTY 1

Socket



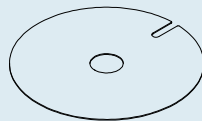
QTY 1

Shelf



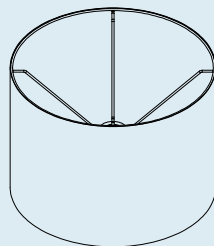
QTY 1

Base



QTY 1

Diffuser



QTY 1

Shade



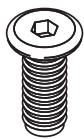
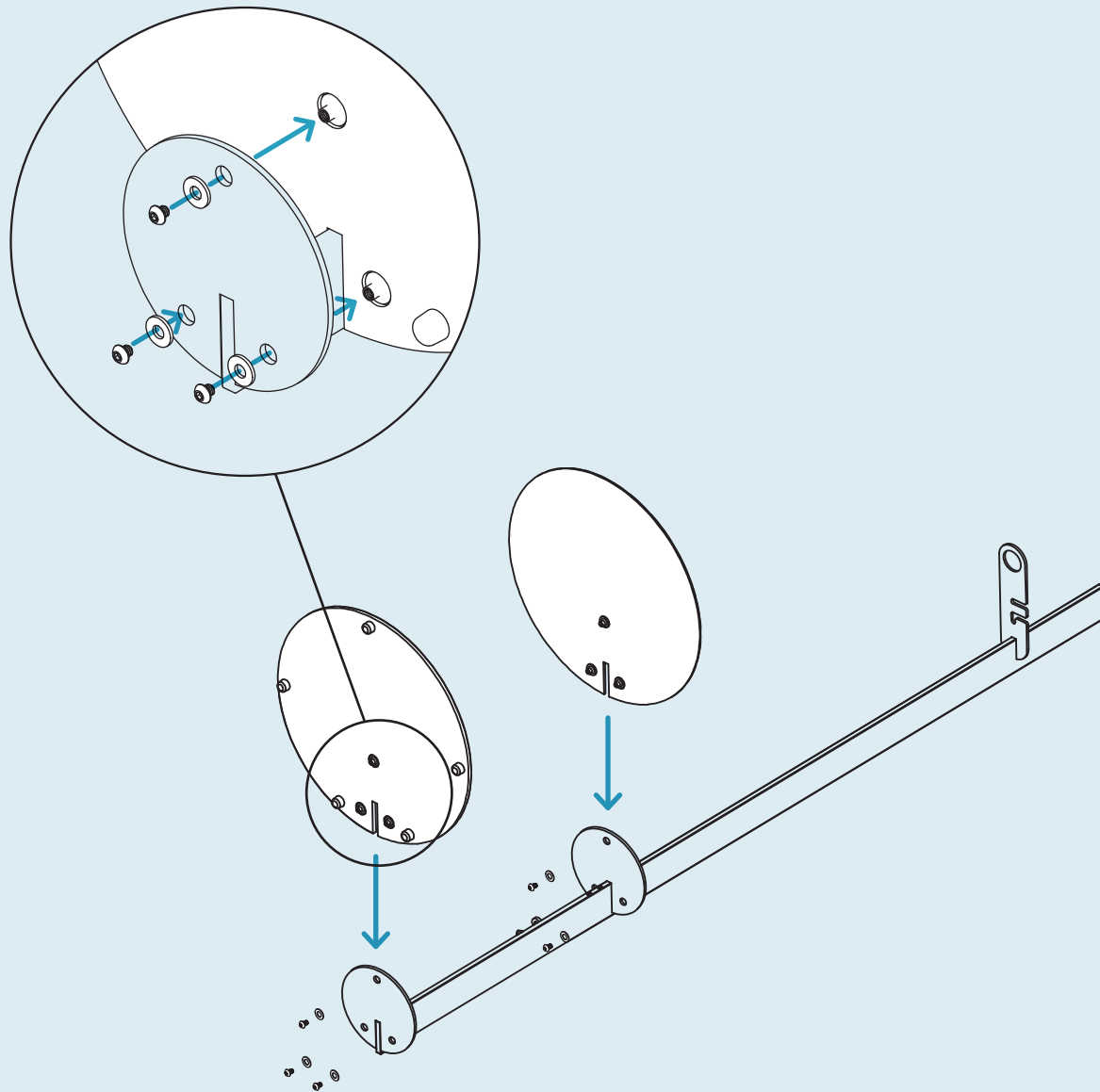
QTY 1

Support

Step 01

ATTACHING THE PANELS.

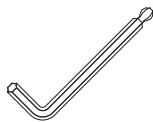
With the support on a soft surface, attach the base and shelf as shown using the provided hardware.



PT. 1076 x 6



PT. 8040 x 6

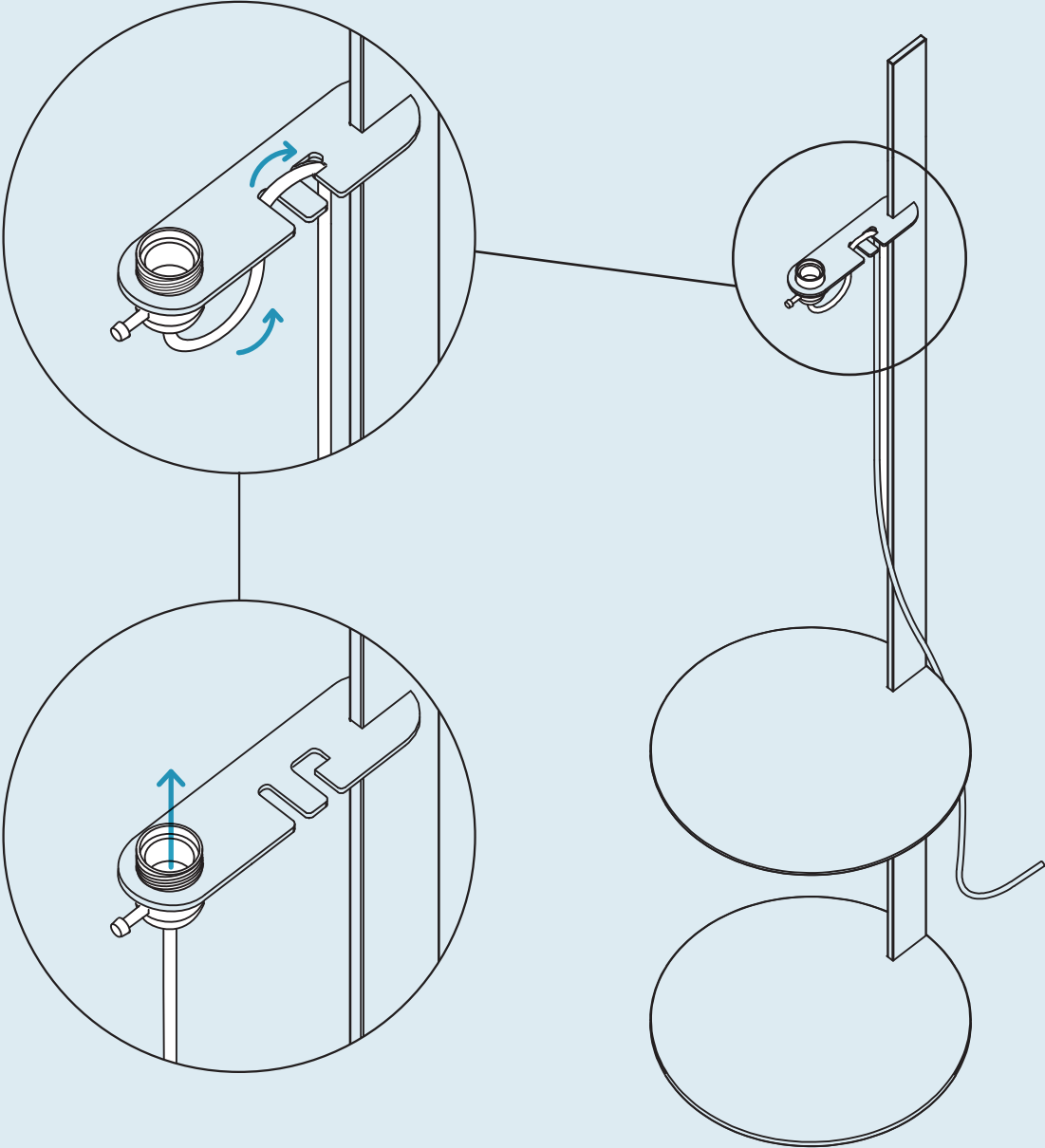


PT. 9018 x 1

Step 02

INSTALLING THE SOCKET.

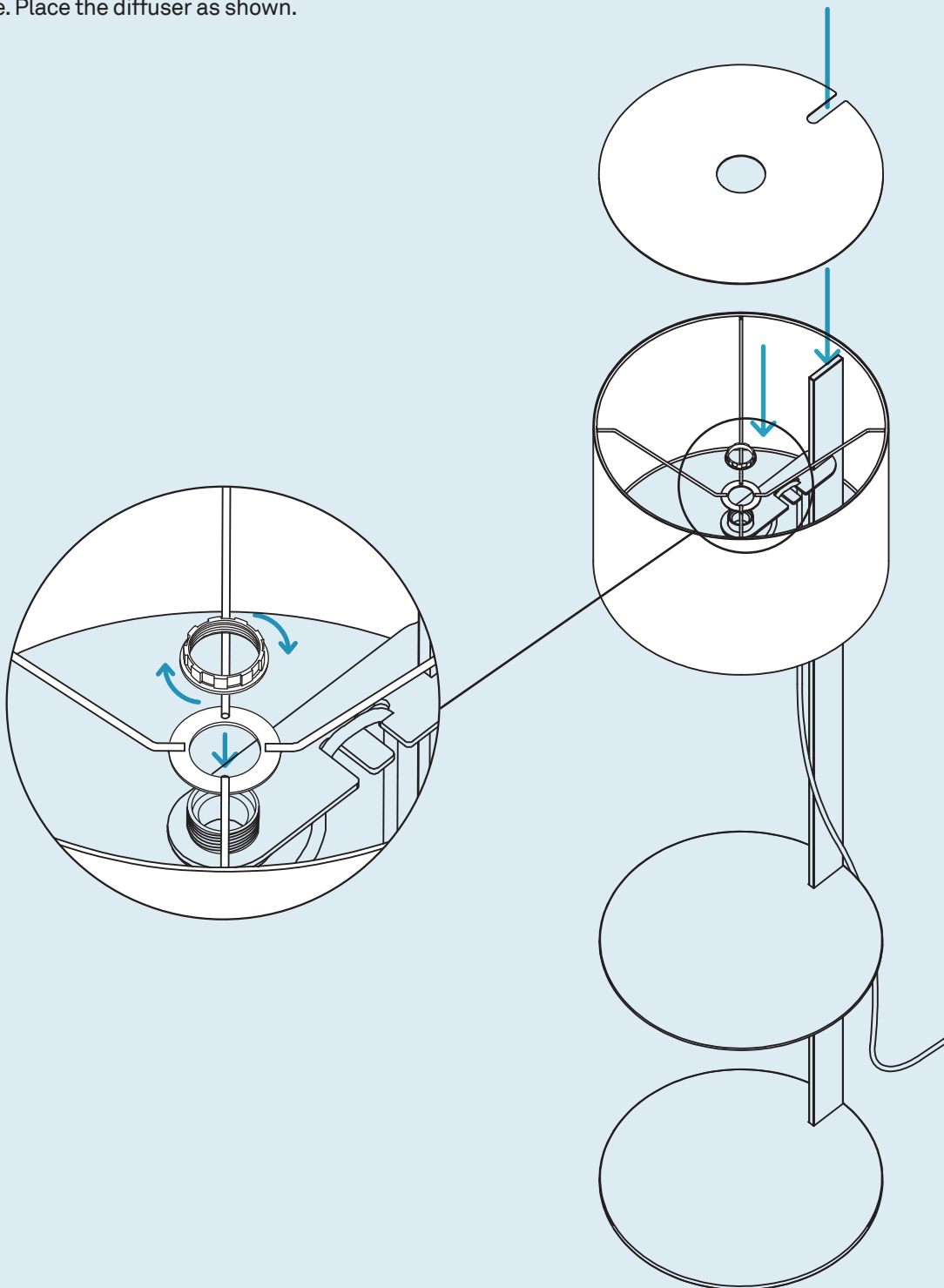
Begin by pushing the socket up through round housing. Next, thread cord onto brace as shown.

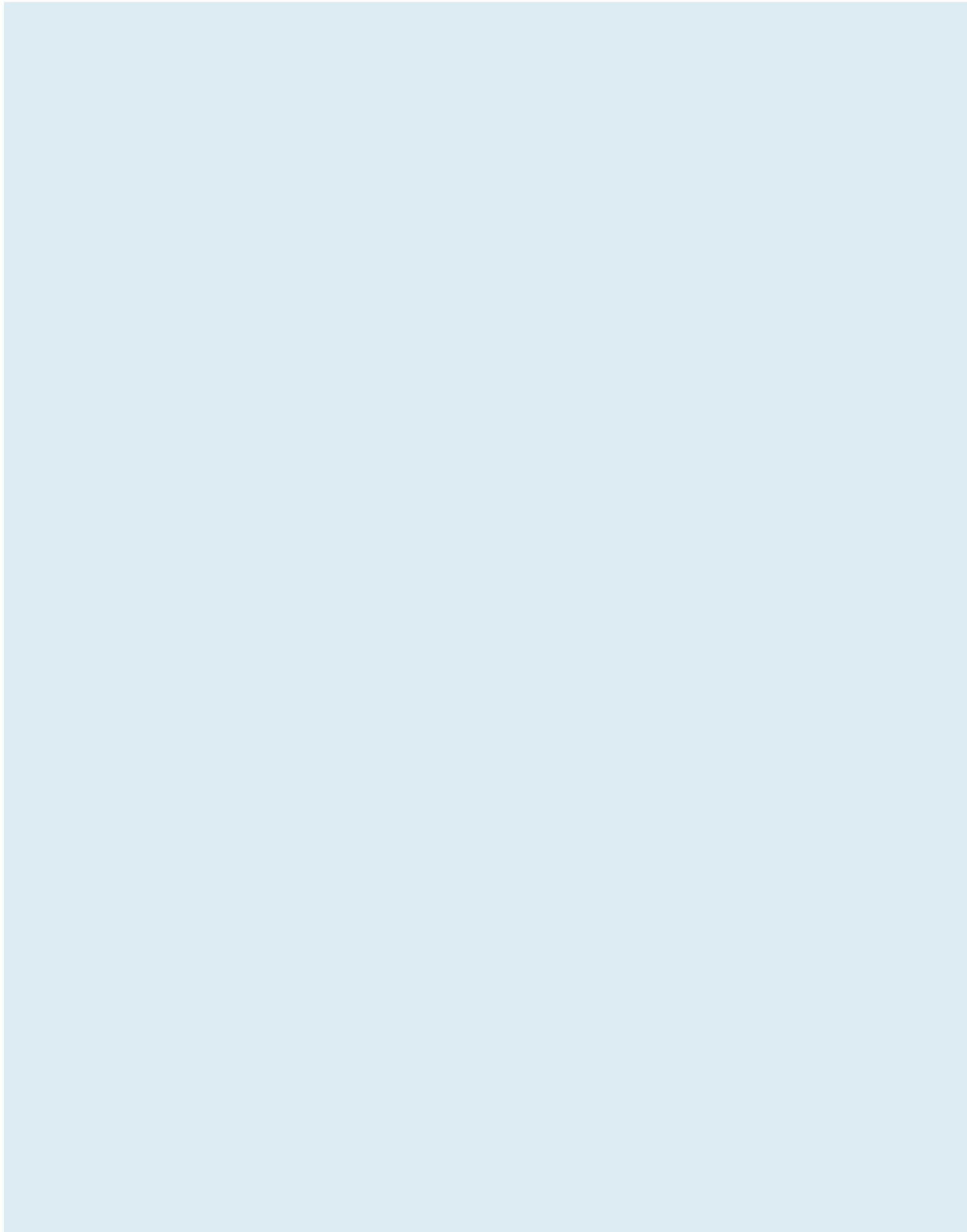


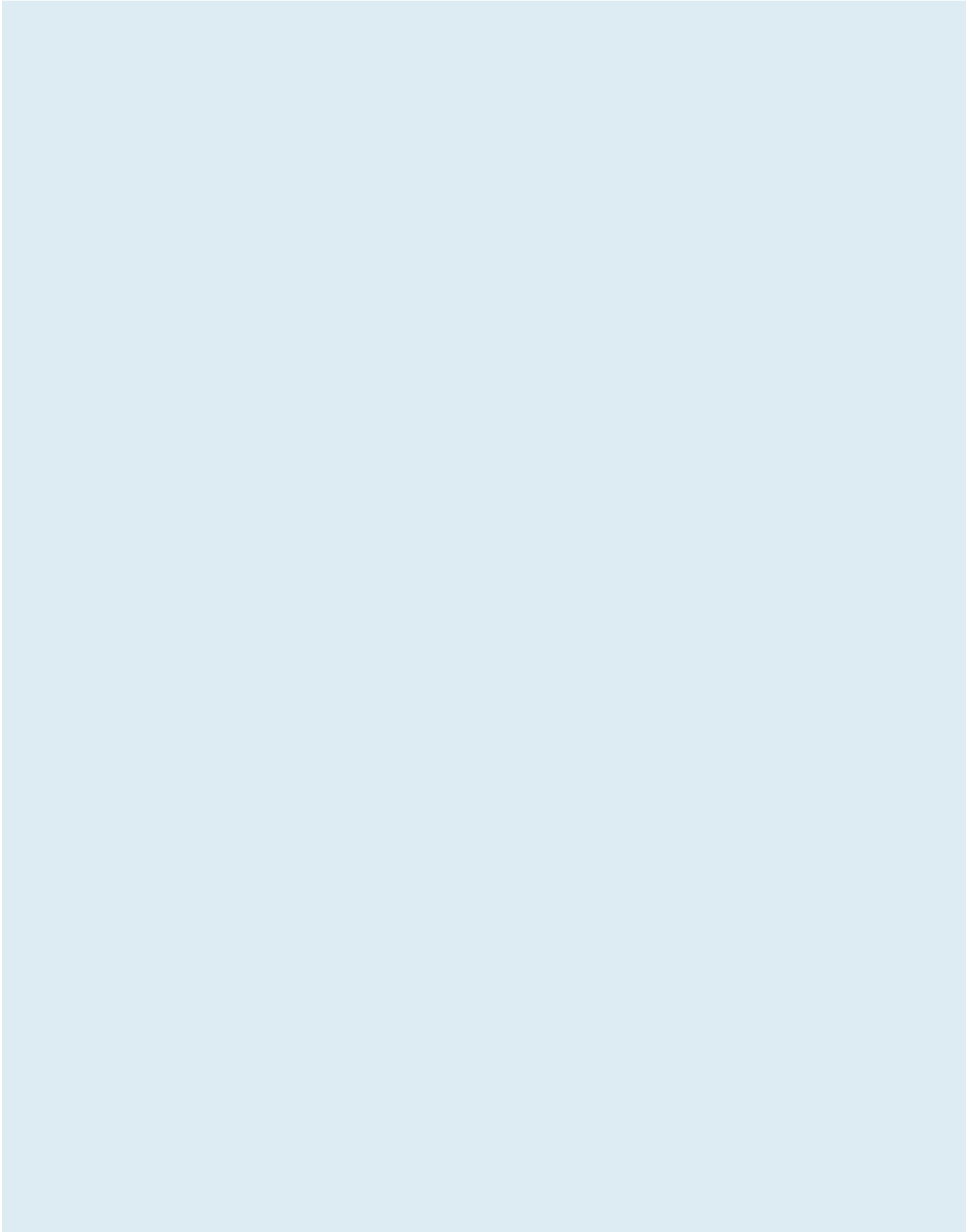
Step 03

INSTALLING THE SHADE.

Place the shade as shown. Thread the shade ring onto the light socket and tighten to secure shade. Place the diffuser as shown.







Additional Information

NOTE

A light bulb (E-26 9W LED) is provided.

CLEAN

Unplug lamp prior to cleaning. Clean with a high quality cleaner formulated for painted products.

