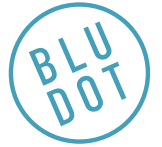
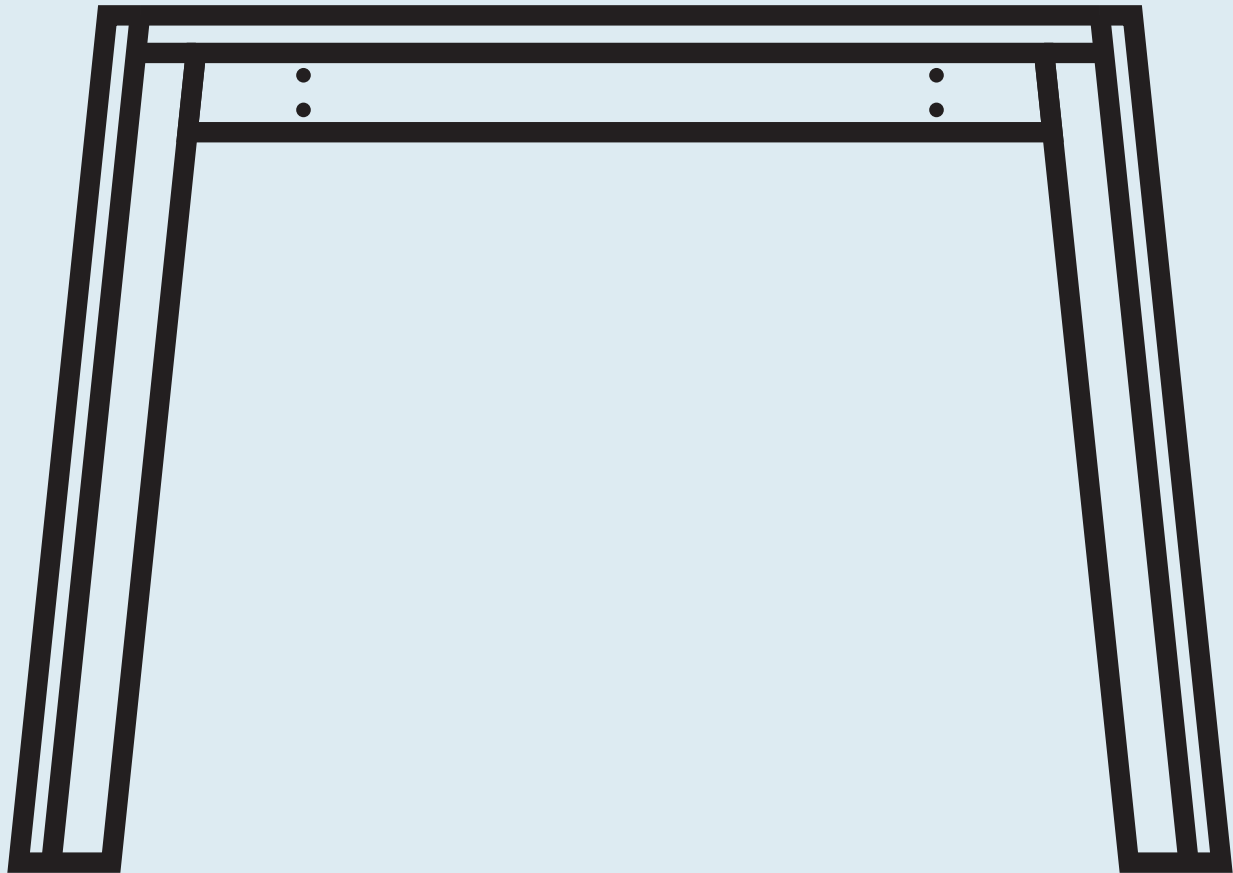


# Lake Round Dining Table



DESIGNED IN 2013

ASSEMBLY NOTES | REV 01



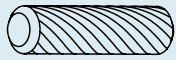
## DIVE IN.

Glass floats on a solid wood frame resulting in a seductive combination fit for the boardroom, feasts of molecular gastronomy, or Sunday night hotdish.

## NEED A HAND?

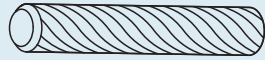
Contact us at [service@bludot.com](mailto:service@bludot.com) or **844.425.8368** for assistance.

# Parts & Hardware



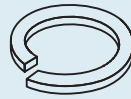
QTY 2

Pt. 5020



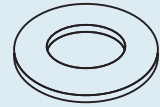
QTY 1

Pt. 5022



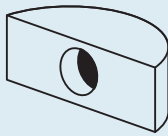
QTY 4

Pt. 3001



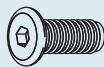
QTY 4

Pt. 3002



QTY 4

Pt. 8028



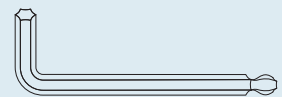
QTY 3

Pt. 1068



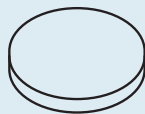
QTY 4

Pt. 1067



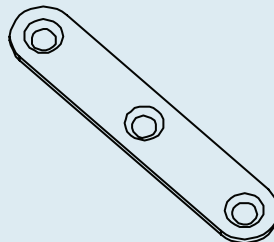
QTY 1

Pt. 9015



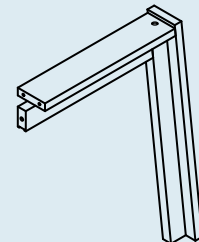
QTY 4

Pt. 4021



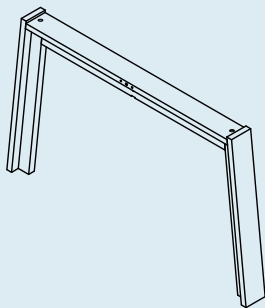
QTY 1

Bracket



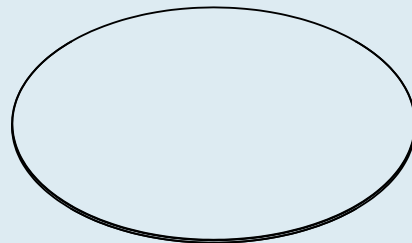
QTY 2

Minor Leg



QTY 1

Major Leg



QTY 1

Glass Top

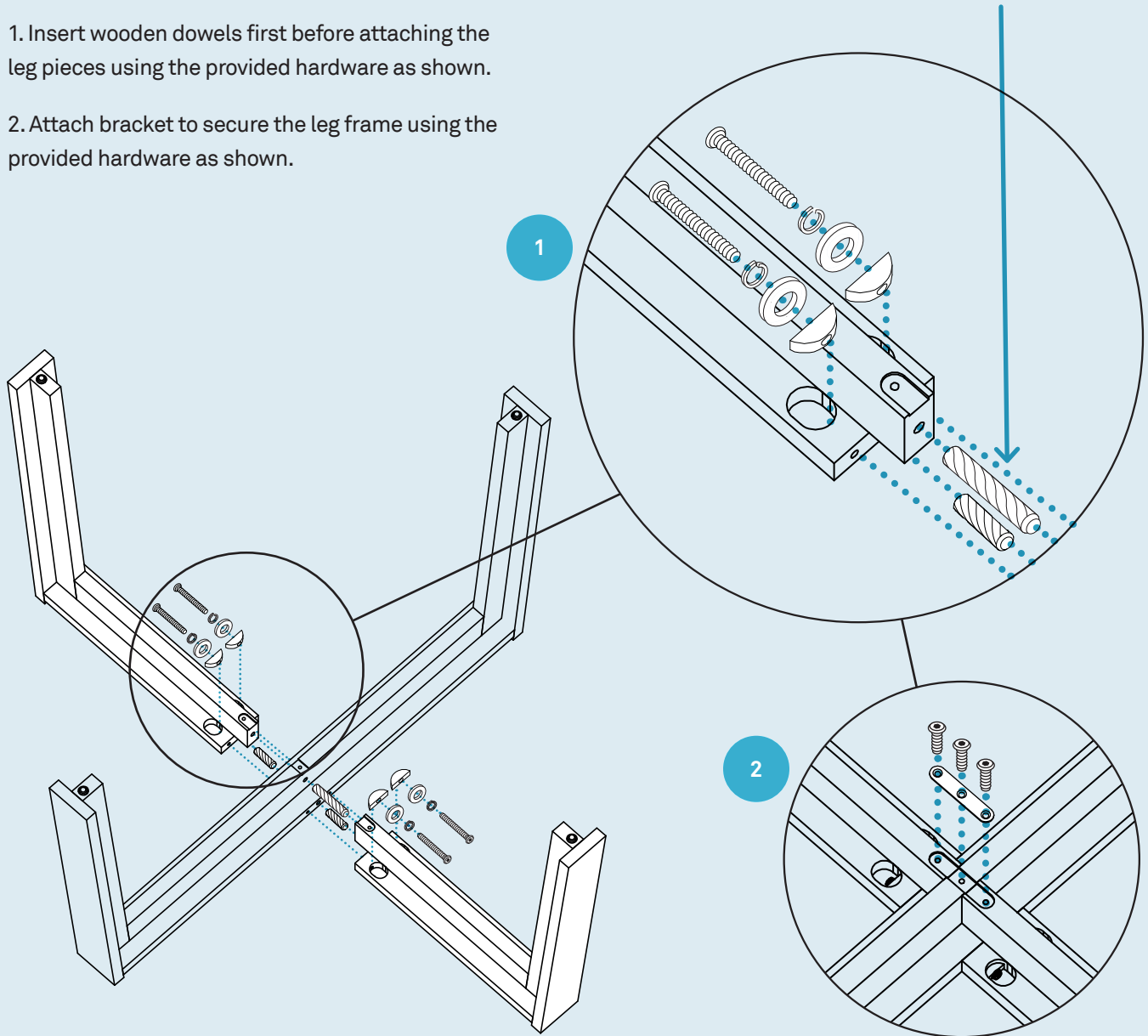
# Step 01

## ASSEMBLE LEG FRAME.

Assemble components upside down as shown.

1. Insert wooden dowels first before attaching the leg pieces using the provided hardware as shown.
2. Attach bracket to secure the leg frame using the provided hardware as shown.

Dowel Pt. 5022 goes through the Major Leg piece into both Minor Leg pieces.



PT. 5022 X 1



PT. 5020 X 2



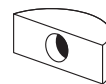
PT. 1067 X 4



PT. 3001 X 4



PT. 3002 X 4



PT. 8028 X 4



PT. 1068 X 3



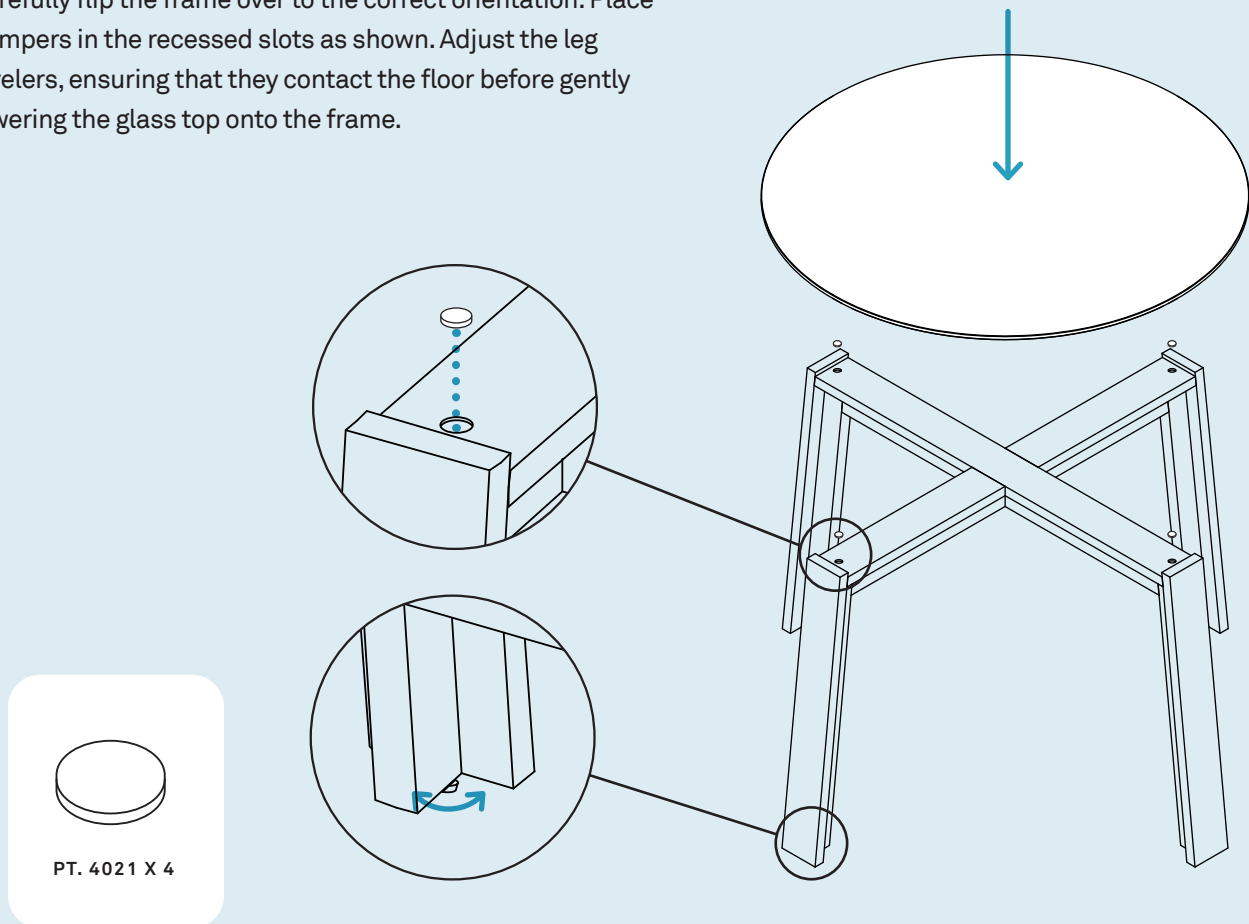
PT. 9015 X 1

## Step 02

INSTALL GLASS TOP.

**Caution: Two or more people are required to safely complete the following steps.**

Carefully flip the frame over to the correct orientation. Place bumpers in the recessed slots as shown. Adjust the leg levelers, ensuring that they contact the floor before gently lowering the glass top onto the frame.



## Additional Information

### GLASS

Clean with a slightly damp, soft cloth. To remove dirt and fingerprints, use a quality cleaner formulated for glass surfaces. Do not use abrasive cleaners.

### WOOD

Clean with a slightly damp, soft cloth. To remove dirt and fingerprints, use a quality cleaner formulated for wood furniture. Wipe completely dry with a soft cloth in the direction of the wood grain.

