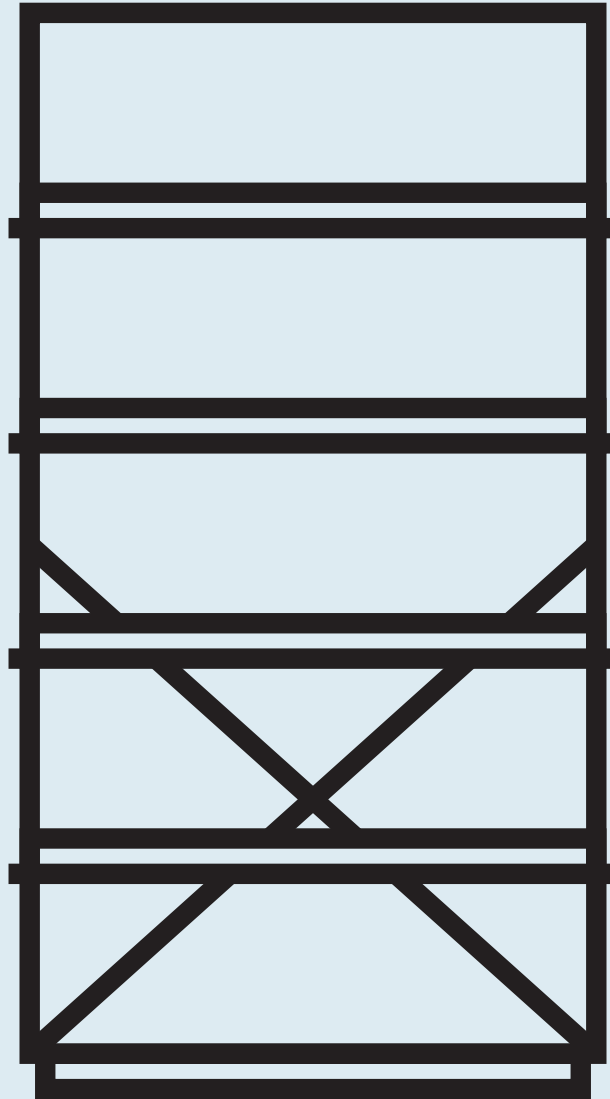


D3 Bookcase

DESIGNED IN 2012

ASSEMBLY NOTES | REV 00



NEED A HAND?

Contact us at service@bludot.com or
844.425.8368 for assistance.

@BLUDOT

We design all our pieces in our Minneapolis studio. Follow
along on Instagram for some sneak peeks into the process.

Parts & Hardware



QTY 12

PT. 5012



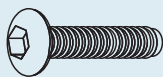
QTY 8

PT. 5013



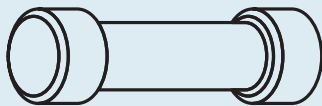
QTY 12

PT. 5002



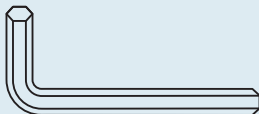
QTY 4

PT. 1698



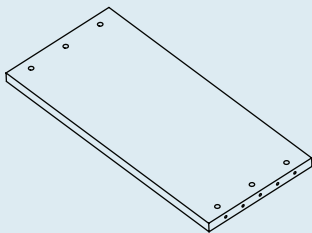
QTY 16

PT. 8012



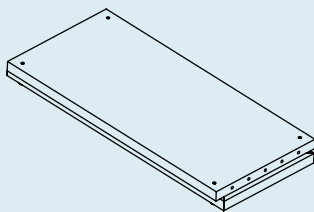
QTY 1

PT. 9004



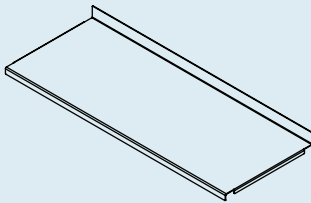
QTY 1

Top Panel



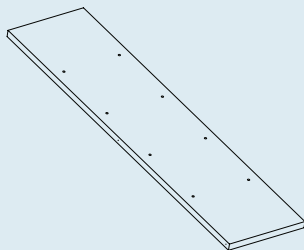
QTY 1

Bottom Panel



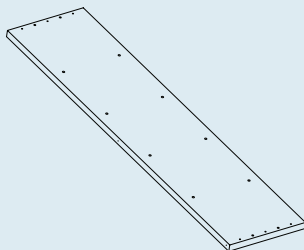
QTY 4

Shelf Panel



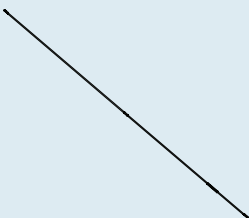
QTY 1

Left Side Panel



QTY 1

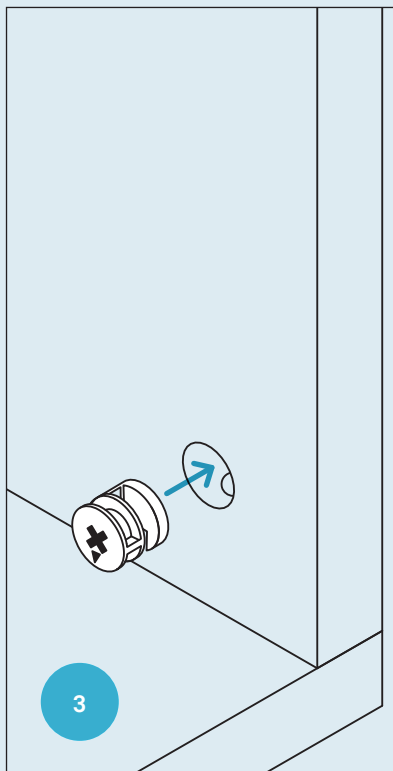
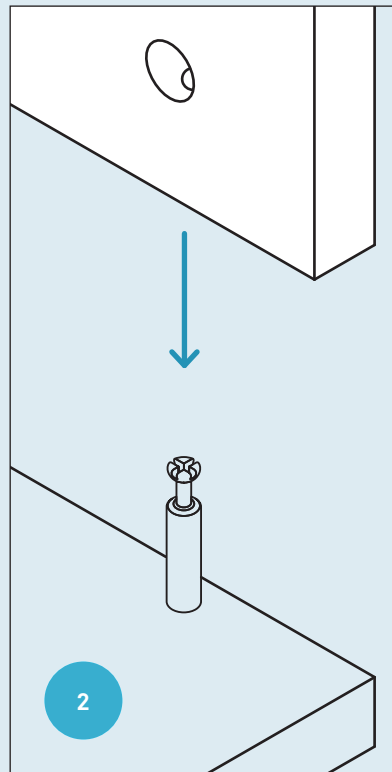
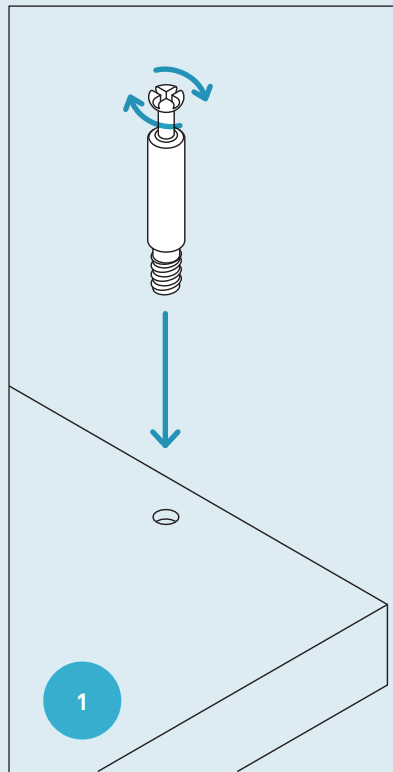
Right Side Panel



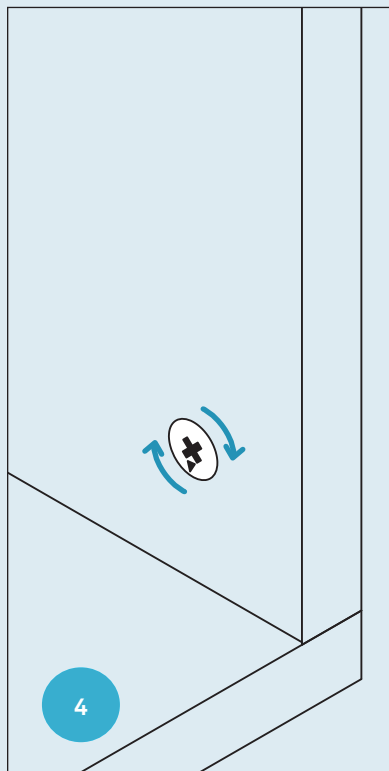
QTY 2

Brace Rod

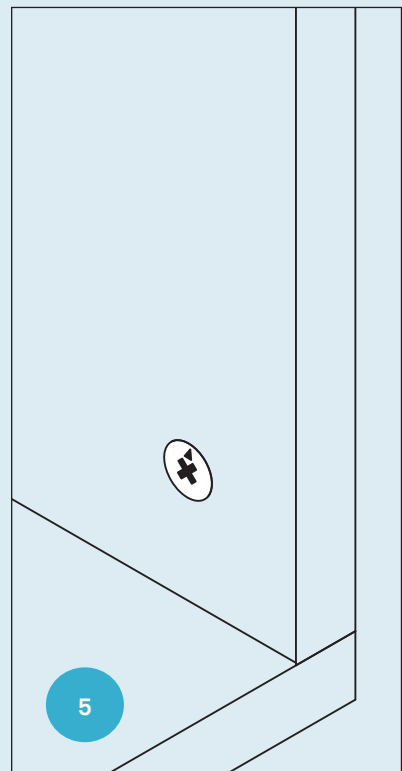
How to use the cam lock system



Note direction of cam arrow.



Turn cam clockwise 1/2 turn or until tight.



Note direction of cam arrow.

Step 01

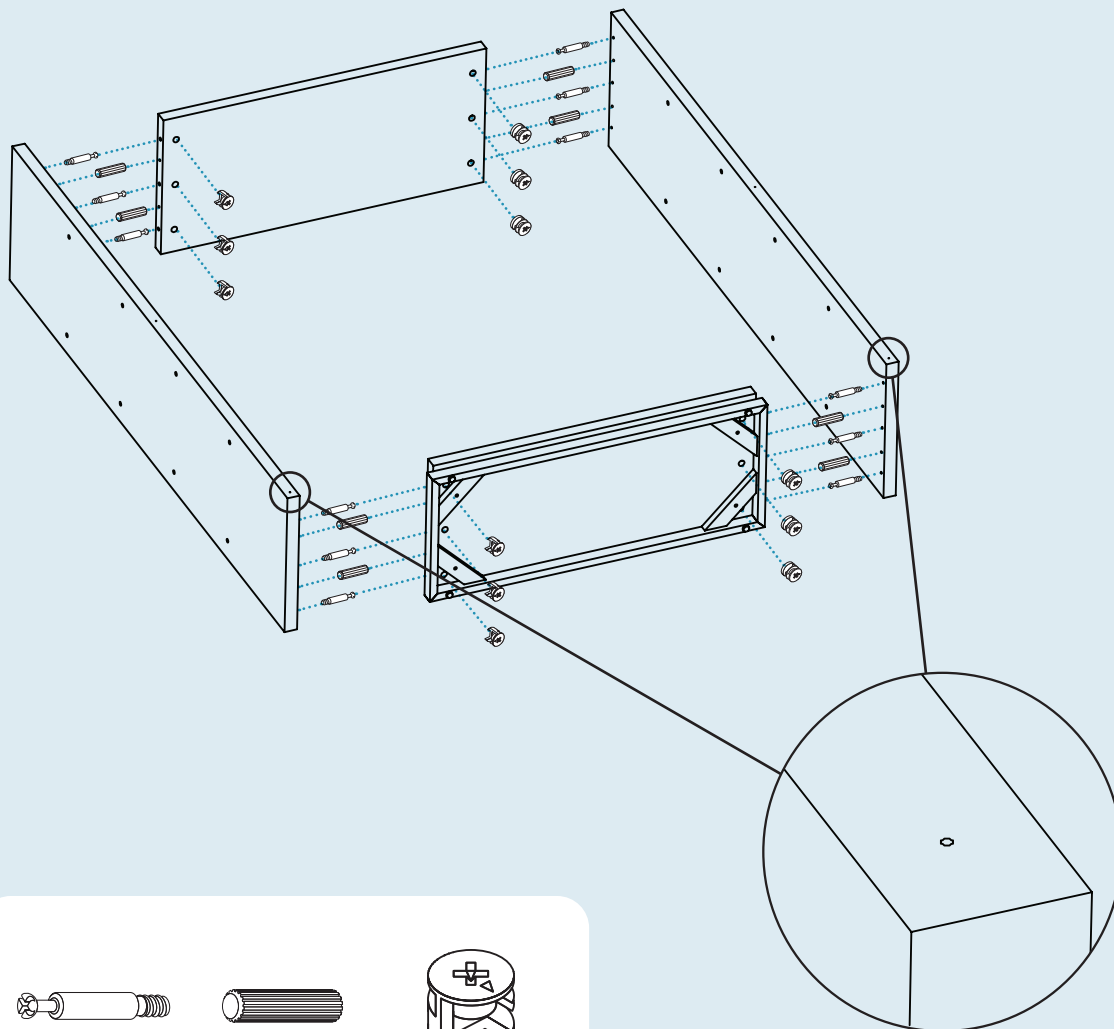
ASSEMBLE CASE.

Assemble this bookcase on a soft, flat surface with the help of another individual.

Screw **PT. 5002** flush in the left side panel and right side panels.

Carefully tap **PT. 5013** into place in the left side panel and right side panels.

Refer to page 2 for instructions on how to use **PT. 5012** to lock hardware in place.



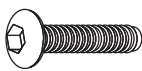
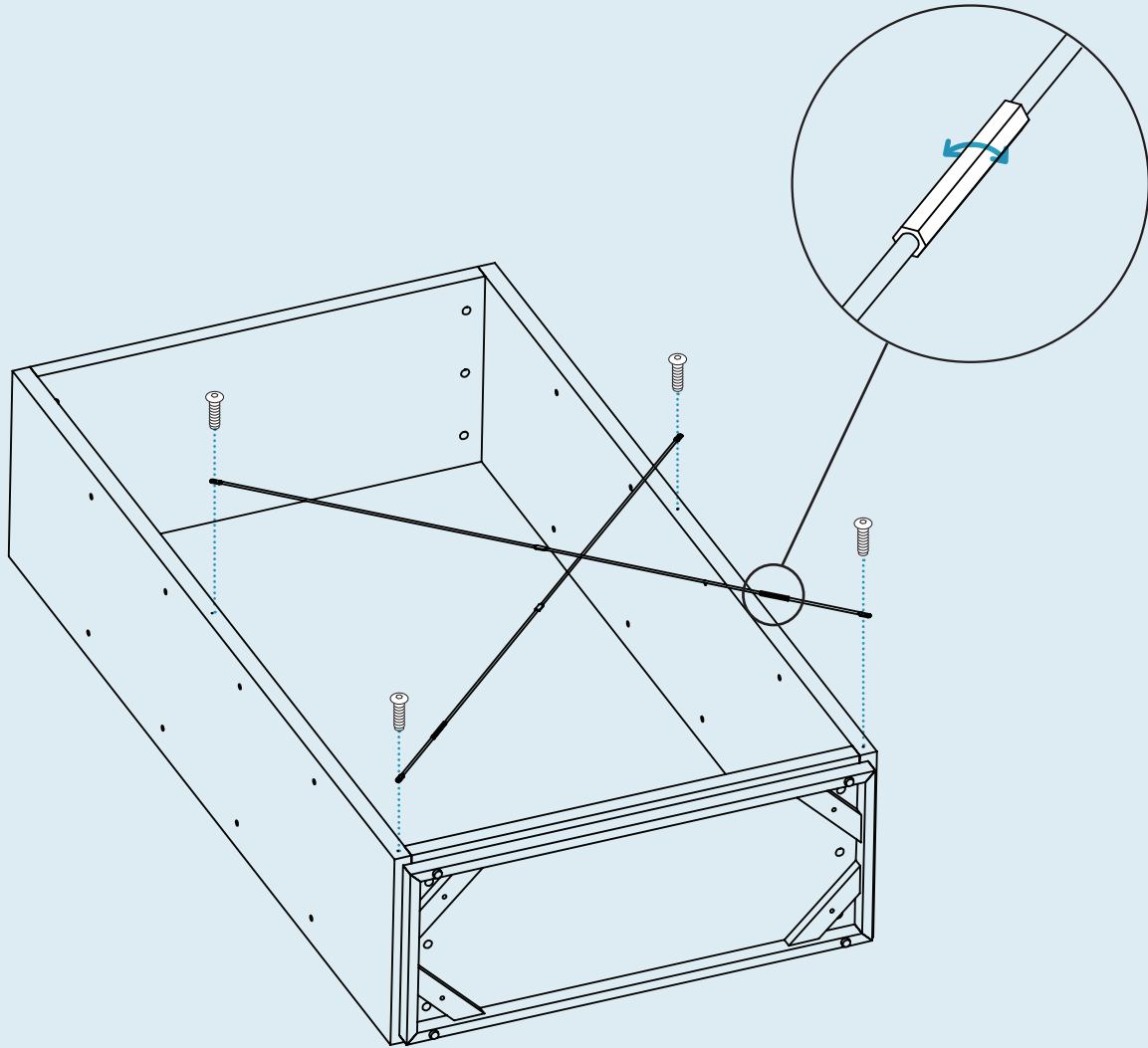
Ensure holes on bottom corners are facing up.

Step 02

ATTACH BRACE RODS.

Attach brace rods to side panels using provided hardware as shown.

Check that the case is square. Adjust rod lengths to line up with holes.



PT. 1698 x 4

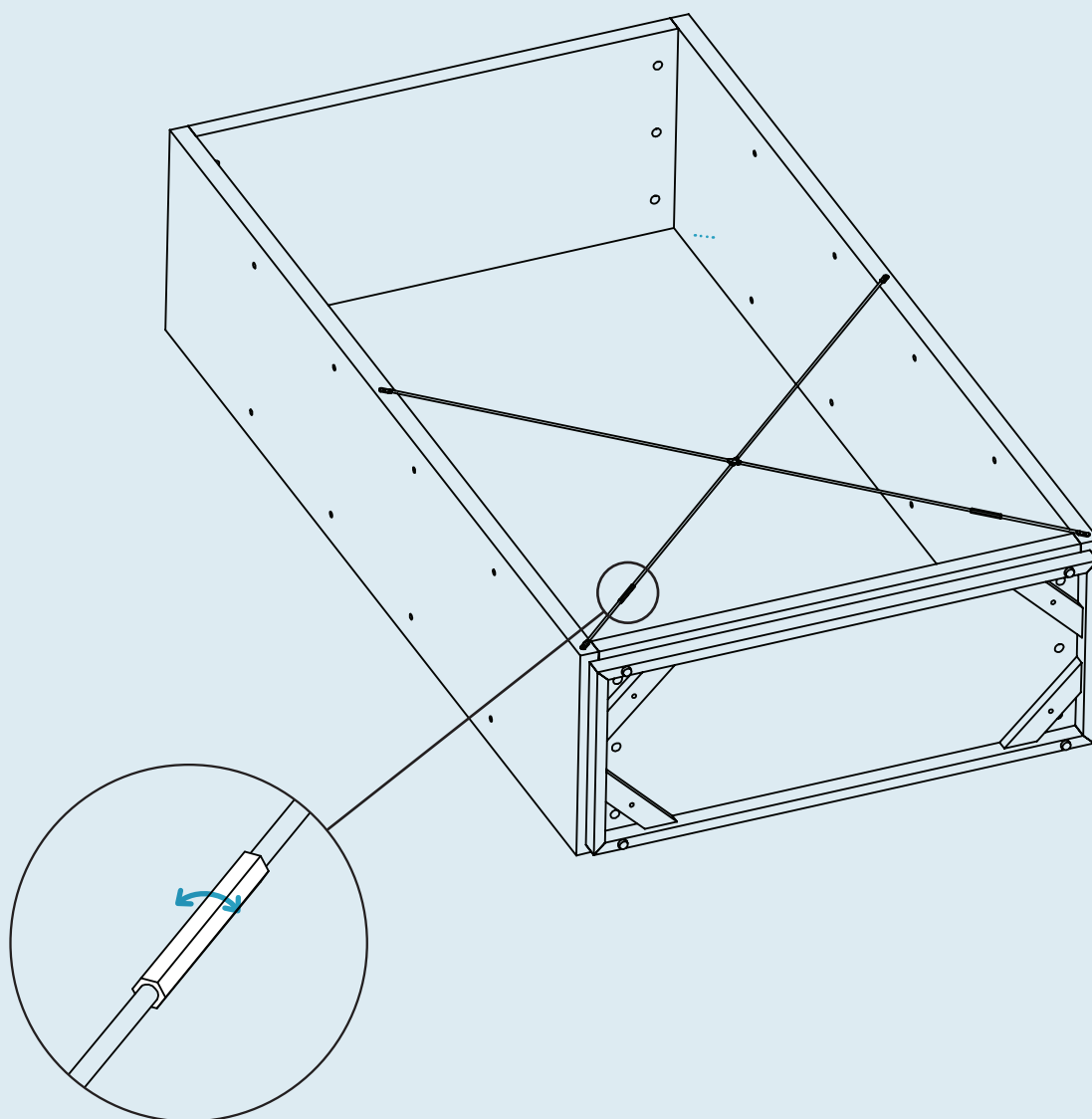


PT. 9004 x 1

Step 03

TIGHTEN BRACE RODS.

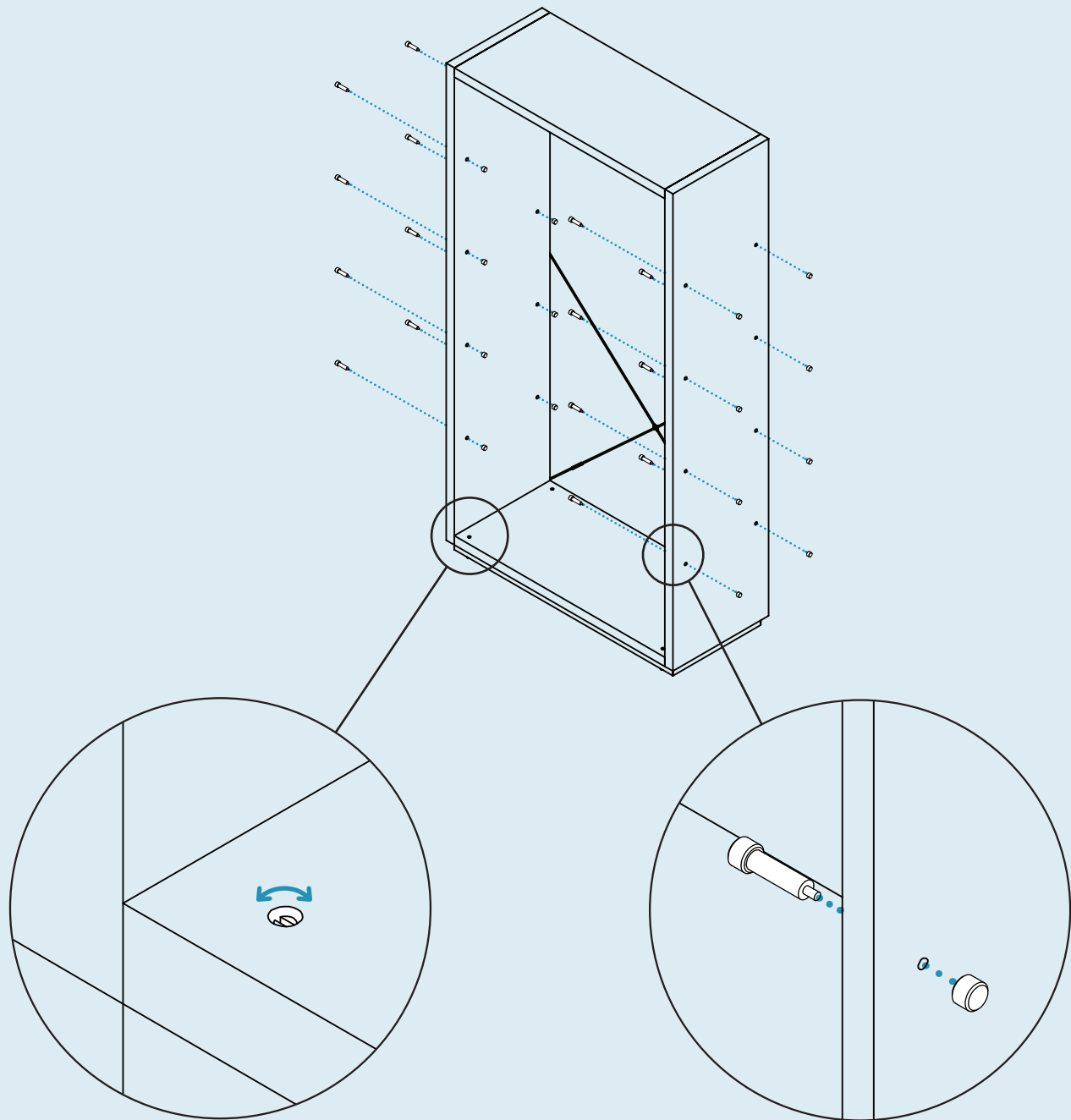
After the brace rods are screwed down, give them a final tightening.



Step 04

ATTACH SHELF PINS.

Thread shelf pins into place as shown.

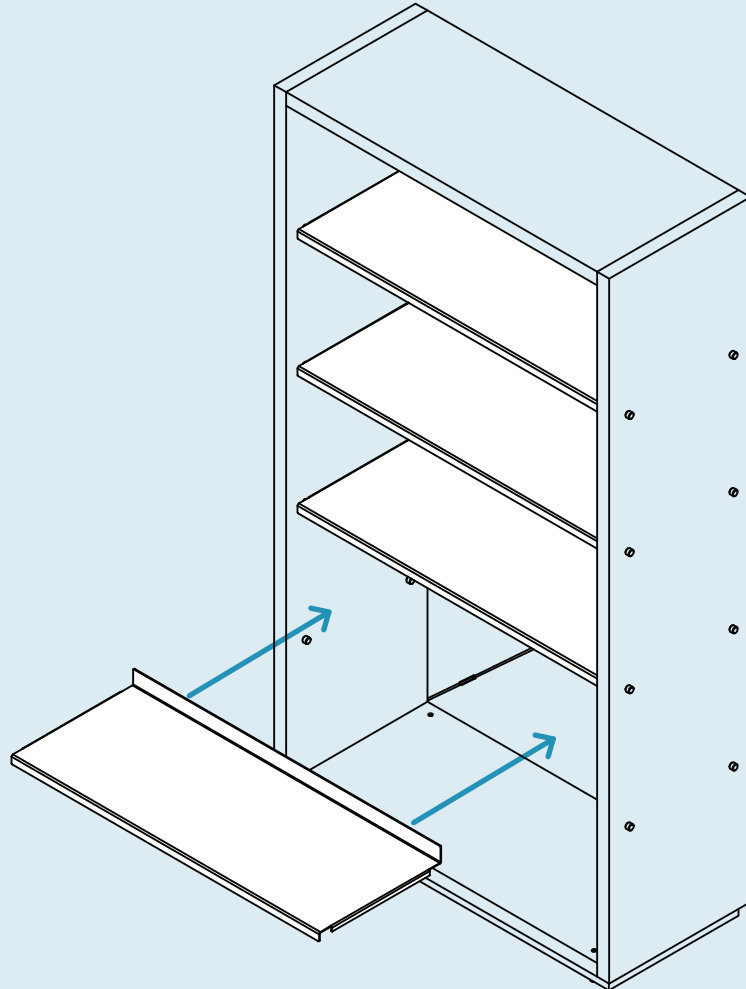


Turn to adjust the feet
height to level the case.

Step 05

INSTALL SHELVES.

Place shelf panels into the case as shown.
Ensure that the case is level prior to use.



Additional Information

CLEAN

Clean with a slightly damp, soft cloth. To remove dirt and fingerprints, use a quality cleaner formulated for wood and metal furniture. Wipe completely dry with a soft cloth in the direction of the wood grain.

