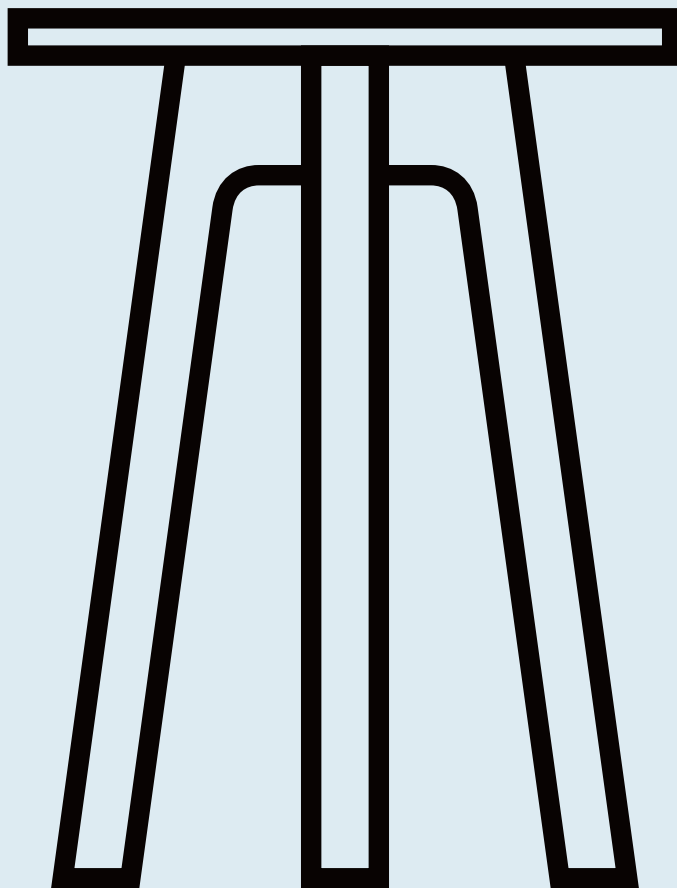
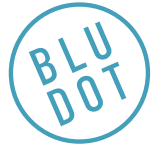


# Apt Tall Side Table

DESIGNED IN 2021

ASSEMBLY NOTES | REV 00



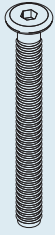
NEED A HAND?

Contact us at [service@bludot.com](mailto:service@bludot.com) or  
**844.425.8368** for assistance.

@BLUDOT

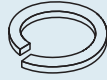
We design all our pieces in our Minneapolis studio. Follow  
along on Instagram for some sneak peeks into the process.

# Parts & Hardware



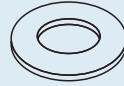
QTY 6

Pt. 1684



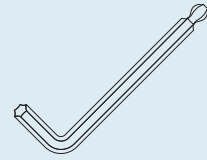
QTY 6

Pt. 3005



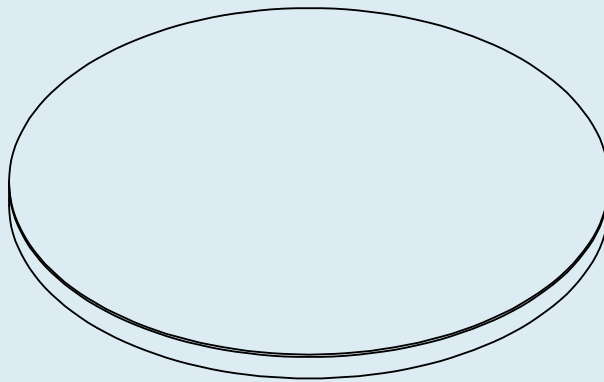
QTY 6

Pt. 3007



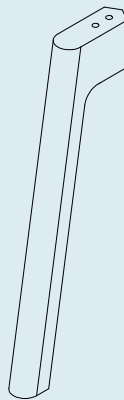
QTY 1

Pt. 9017



QTY 1

Top



QTY 3

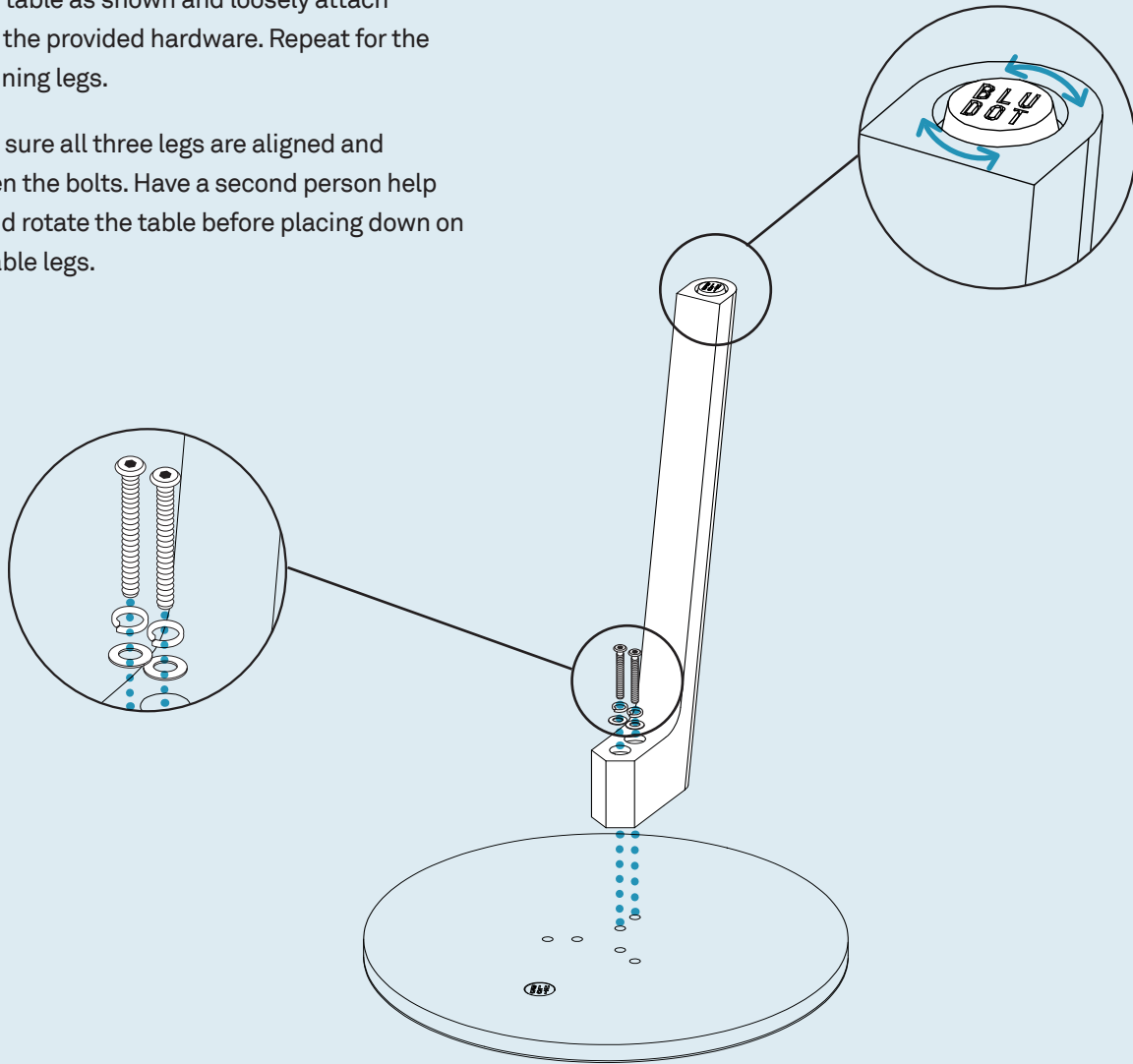
Leg

# Step 01

## ATTACHING THE LEGS.

Place the top frame face down on a soft surface as shown. Align the leg with the holes in the table as shown and loosely attach using the provided hardware. Repeat for the remaining legs.

Make sure all three legs are aligned and tighten the bolts. Have a second person help lift and rotate the table before placing down on the table legs.



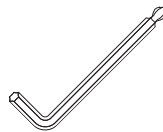
PT. 1684 x 6



PT. 3005 x 6



PT. 3007 x 6



PT. 9017 x 1

## Additional Information

### CLEAN

Clean with a slightly damp, soft cloth. To remove dirt and fingerprints, use a quality cleaner formulated for wood furniture. Wipe completely dry with a soft cloth in the direction of the wood grain.

